



www.acp-waffen.de
www.gebrauchtdiscount.de
www.munitionsdiscount.de

ACP Schützen - & Sicherheitsbedarf
Andreas Chlewinski, 41539 Dormagen
Krefelder Str. 33, Tel: 02133-10909



WWW.HERA-ARMS.COM

HERAARMS
PRODUCT CATALOG 2010-2





The Hera CPE (Colt Pistol Extension) was developed for Mil-Spec 1911 pistols. The design gives the possibility of transforming a 1911A1 into a fully functional carbine. From modern polymers the CPE is manufactured with a steel strengthened core and creates a solid platform for optics and other accessories. Alternatively the shoulder stock can be removed for use with a sling swivel.

On the CPE users find Picatinny rails to assist in mounting optics or open sights. At the foregrip there are points for two additional Picatinny rails located at the 3 and 9 o'clock positions. With the CPE the 1911 becomes a pistol with more flexibility for use with different shooting disciplines. For assembly, only the grip screws and original grips must be removed, the 1911 is then placed into the housing and refastened. The CPE permits the use of changing systems like .22 or 9mm and also the use of longer barrels up to 16". All AR15/M4 style shoulder stocks can be installed.

ACCESSORYS

- Front Tube Extension (FTE)
- Side Rails
- Sling Swivel Endcap Adapter

FEATURES

- Stable Platform made of polymer and metal.
- Continuous Picatinny rail on the top side
- Mounting positions for rails at the 3 and 9 o'clock positions.
- No change of basic weapon necessarily



Patent Pending

Category: Pistol
 Weight: 813 Grams w/o Stock
 Dimensions: 405mm x 160mm x 50mm
 Material: Reinforced Polymer / Stainless Steel / Aluminium
 Mounting Type: Screws
 Available for: 1911A1 Mil-Spec / Similar

CPE / CARBINE PISTOLE EXTENSION
 FOR COLT 1911A1 MIL-SPEC OR SIMILAR



The Hera GCC (Glock Carbine Conversion) gives the advantage of a SBR to a Glock Pistol. The pre-installed Picatinny rails on the 12 and 6 o'clock position makes it possible to install aftermarket accessories such as optics and open sights as well as foregrips. At the front of the GCC there are points for two additional Picatinny rails located at the 3 and 9 o'clock positions. The charging handle can be installed on either the left or right side for user preference. All required tools are provided.

With the versatility of the GCC stock the following Glock models may be used: G17/22/31 & G19/23/32. Users may also install longer barrels problem-free.

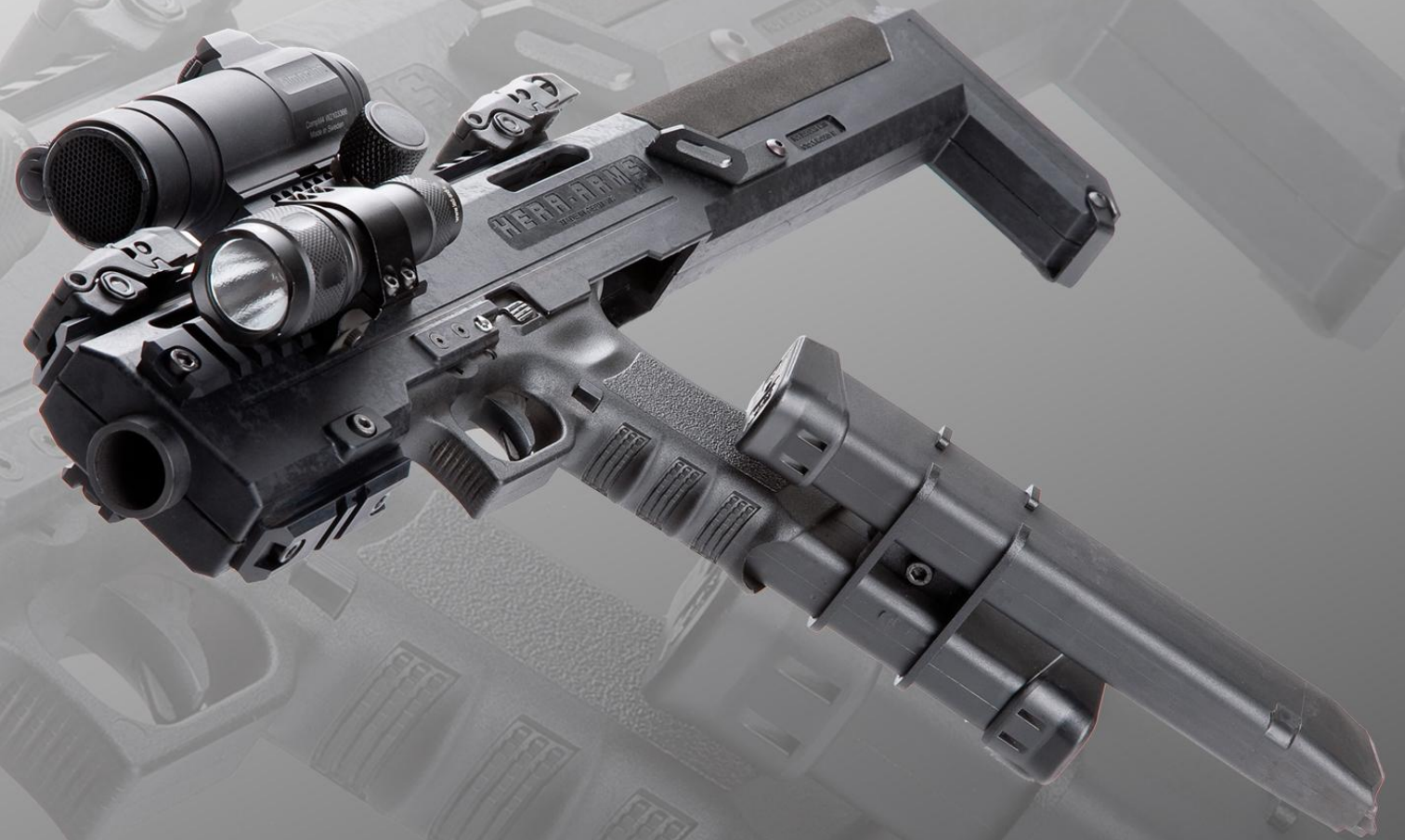
ACCESSORYS

- Side Rail Set (2 Pieces)
- Sling Adapter
- Magazine Clamp

FEATURES

- Stable Platform made of polymer and metal.
- Continuous Picatinny rail on the top side.
- Mounting positions for rails at the 3 and 9 o'clock positions.

Category: Pistol
 Weight: 652 Grams
 Dimensions: 510mm x 120mm x 35mm
 Material: Reinforced Polymer / Stainless Steel / Aluminium
 Mounting Type: Screws / Pin
 Available for: G17/19/22/23/31/32 min. Gen.3 Frame



GCC / GLOCK CARBINE CONVERSION
 FOR GLOCK MODEL 17 / 19 / 22 / 23 / 31 / 32 (GEN3)



FSC

For the H&K USC Hera has developed the FSC (Folding stock Conversion). With the folding stock the weapon can be transported more easily and with the textured pistol grip ergonomics have been increased. When desired, an adapter for AR15 stocks can be installed. Thus the length of the weapon can be varied when using an AR15 sliding stock. The FSC makes an optically responding and ergonomic weapon out of your H&K USC. The sporty usefulness remains.



MAGAZINES

The 20rd. magazine is a "one of a kind" produced by H.E.R.A. product made entirely out of high grade aluminum using the best CNC-milling technology available. It can be used in original USC magazine wells without any changing to the weapon.



RAIL-SYSTEMS

All our Picatinny-Rails are "Made in Germany" and made out of high grade Aluminium. The Top Rail of our USC rail is equipped with a rounded edge in the front area to give the USC a more fluid look and avoid sharp edges.



Category: Rifle Stocks
Weight: 470 Grams
Dimensions: 360mm x 190mm x 55mm
Material: Reinforced Polymer
Mounting Type: Screws
Available for: Heckler and Koch USC .45

Category: Rail Systems
Material: Aluminium
Mounting Type: Screws
Available for: Heckler and Koch USC .45

Category: Magazines
Weight: 330 Grams
Dimensions: 305mm x 40mm x 20mm
Material: Aluminium
Capacity: 20 Round
Available for: Heckler and Koch USC .45



The Hera BCK (Buttstock Conversion kit), developed for the H&K SL-8 rifle, replaces the thumbhole stock of the standard SL-8. Therefore the BCK offers the compatibility to use AR15 pistol grips and the possibility of AR15 butt-stocks to be installed. The original trigger group of the SL8 may be used. No permanent changes are necessary to install the BCK to the original weapon. The BCK is supplied with an installed Hogue pistol grip. When using the BCK housing, the H&K SL-8 receives responding optics and outstanding ergonomics. A further advantage is the material choice of the BCK housing. The BCK is manufactured from a high quality and stabile aviation aluminum.

BCK FEATURES

- Stable platform made of aircraft grade aluminum.
- No change of the basic weapon necessary
- Hogue grip is included

RAIL-SYSTEMS

All our Picatinny-Rails are "Made in Germany" and made out of high grade Aluminium. Our Rail-Set consists of 3 Rails, two 9-slot side rails and one long 13 slot bottom rail.

Category: Rail Systems
 Material: Aluminium
 Mounting Type: Screws
 Available for: Heckler and Koch SL-8

Category: Rifle Stocks
 Weight: 450 Grams
 Dimensions: 300mm x 140mm x 25mm
 Material: Aluminium
 Mounting Type: Screws
 Available for: Heckler and Koch SL-8

COMING SOON



Category:	Sights
Weight:	150 Grams
Dimensions:	50mm x 25mm x 12mm
Material:	Aluminium
Mounting Type:	Weaver
Dot-Size:	4MOA
Sight-Window:	22mm x 19mm
Parallax-free-distance:	40m
Power supply:	3 V with 1 x CR 1225 (Lithium)



The Hera CQS is a durable high quality sight engineered to give the user the advantage of a red dot sight in a compact housing with a retractable lens whether you use it for competition shooting or sport shooting. The optical glass lens is parallax corrected and produces a clear, high resolution image. The retractable lens function of the CQS allows for a streamline base that allows a user the option of open or iron sights. A quick flip of the lens latch releases the lens into the open position. In the open position the CQS functions as a red-dot reflex sight with multiple brightness levels and a quick on/off button. The 35mm diameter lens in combination with the 4MOA dot allows unlimited eye relief and a wide field of view.

The CQS is one of the smallest and most versatile sights of its kind. Standard sights force your eye to focus on the rear and front sight, while the Hera CQS allows users to have both eyes open, improving peripheral view. Included with your CQS are two 3 volt lithium batteries, hex wrenches and a mounting base for Picatinny rail systems.

CQS / CLOSE QUARTER SIGHT



Category:	Rifle Stocks
Weight:	208 Grams
Dimensions:	60mm x 50mm x 30mm
Material:	Aluminium
Mounting Type:	Screws
Available for:	Franchi SPAS-15



H.E.R.A. Franchi-Stock-Adapter for the Franchi SPAS-15.

With a simple installation involving a two-part construction using 3x an interior lying stainless steel bolts. The stock adapter allows the use of a M4 style stock while still staying in the legal length of 95cm (depending on local laws).

FEATURES

- Stable platform made of aluminium and stainless steel
- Possibility to install M4-Style buttstocks
- Overall length above 95 cm

FSA / FRANCHI-STOCK-ADAPTER

FOR FRANCHI SPAS - 15



Category: Lowers
 Weight: -
 Dimensions: -
 Material: 7075T6
 Coating: Hard Anodized
 Available for: AR15 based Systems



The Hera HLS is a modern designed, semi-auto receiver made from high-quality aluminum and is built to handle the hardest use and abuse of tactical and competitive shooting. The AR lower is CNC milled from aircraft aluminum alloy and hard coated anodized for added strength. Available as a stripped lower receiver ready for a full custom build or complete and fully assembled including pistol grip, ambidextrous bolt release and trigger group. Receiver also includes mag release button and A2 pistol grip installed. A2-style pistol grip of polymer gives the Hera AR lower improved handling and protection against weather, dirt, and weapon oils/cleaners.

FEATURES

- Stable platform made of aircraft grade aluminum.
- No change of the basic weapon necessary.
- Ambi-Bolt-Release (ABR) pre-installed.
- Hard anodized.
- Available stripped or complete.

HLS / HERA LOWER SYSTEM
 FOR AR15 / M4 STYLE RIFLES



Category: Lowers
 Weight: -
 Dimensions: -
 Material: 7075T6
 Coating: Hard Anodized
 Available for: AR15 based Systems



The HCL, Hera Commercial Lower, is a newly designed standard AR15/M4 lower system. Keeping Hera's high standard of material and CNC machine milling, we now offer a perfect way to add a new lower to changing systems or to get set up for a new rifle build. Designed and manufactured in Europe for Europe.

FEATURES

- Stable platform made of aircraft grade aluminum.
- No change of the basic weapon necessary.
- Hard anodized.
- Available stripped or complete.

HCL / HERA COMMERCIAL LOWER
 FOR AR15 / M4 STYLE RIFLES



The HUS (Hera Upper System) is developed to give customers a newly designed upper receiver and still keep the MIL Spec fit. Using high quality aluminum makes the HUS upper receiver a more rigid platform. We use the best CNC machines available to ensure that all dimensions are met and that the upper receiver has a tight fit, this increases the life and accuracy of the weapon system.

FEATURES

- New modern design
- High grade aluminum
- 5 axis CNC milled
- Extended brass reflector / forward assist
- Available in Black or Bright Grey

HUS / HERA UPPER SYSTEM
FOR AR15 / M4 STYLE RIFLES

Hera's HCU (Hera Commercial Upper) is built of a 7075T6 Aluminum and milled using the newest 5 axis CNC machines available. Its new design makes the HCU a streamline and hassle free AR15 upper system. Through design tests and customer feedback, Hera now offers a clean and practical addition to its AR15 parts line. Removing the forward assist and changing the contour of the upper gives that custom look without the hefty price tag.

FEATURES

- Sturdy platform built from 7075T6 Aluminum
- Compatible with AR15 rifle systems
- Hard anodized coating for added strength
- Available in Black or Bright Grey

HCU / HERA COMERCIAL UPPER
FOR AR15 / M4 STYLE RIFLES

Category: Uppers
Weight: -
Dimensions: -
Material: 7075T6
Coating: Hard Anodized
Available for: AR15 based Systems



AR15 Bright Grey

To accommodate sport and competition shooters, Hera has added a new line to the AR15 parts family, Bright Grey. The new color scheme allows for complete distinction from the military look. This is also helpful for lands/states that do not allow black semi-automatic rifle systems. Whether you are looking to customize your rifle or require a non-black system, Hera's Bright Grey line gives great quality and stability to your AR rifle.



FEATURES

- Sturdy platform built from 7075T6 Aluminum
- Compatible with AR15 rifle systems
- Hard anodized coating for added strength
- Bright Grey color scheme

AR 15 BRIGHT GREY

FOR AR15 STYLE RIFLES



TRIARII

The new world of pistol carbine conversions is now here. Hera Arms gladly announces the new Triarii. The Triarii has been designed to meet the functions and needs of today's law enforcement/military, agency and sport users. A click and fire system has been developed to ensure that response time is reduced and maximum capability is given. With an approximate 4 second installation/ready to fire time Hera pistol stocks can now provide needed time to any situation. We are honored to have worked with various agencies, officials and customers throughout Europe, listening to their needs and wishes, available for the Sig Pro 2022 and various Glock models.

ACCESSORYS

- Magazine Clamps (Glock)
- Sling Swivel Endcap Adapter

FEATURES

- Sturdy platform built from 7075T6 Aluminum
- Integrated top, side and bottom rails for accessories
- Click and fire system
- Available for Sig Pro 2022, Glock 17/19
- Models for other pistol systems to come
- NO changing/adding components to the pistol
- Buttstock adjustable in length and angle



Category: Pistol stocks
 Weight: 1300g
 Dimensions: 440mm x 65mm x 40mm w/o stock
 Material: Aluminium / Steel
 Coating: Hard Anodized
 Available for: Glock 17/19/22/23/31/32 - SIG 2022

HERA ARMS TRIARII

GLOCK 17/19/2/23/31/32 HK P30 SIG 2022/226/229 WALTHER P99



CPE BLACK
Art. 02.01



GCC Side Rail Set
Art. 07.01.01



FSC /AR
Art. 03.03



CQS Tan
Art. 08.02



CPE TAN
Art. 02.02



GCC Sling Adapter
Art. 01.00.36



AR Adapter Single
03.00.08



CQS Green
Art. 08.03



CPE GREEN
Art. 02.03



Glock Magazine Clamps
Art. 01.00.37



USC Magazine 20Round
Art. 06.01



HLS
Art. 09.01



CPE Side Rail Set
Art. 07.02.01



BCK
Art. 04.01



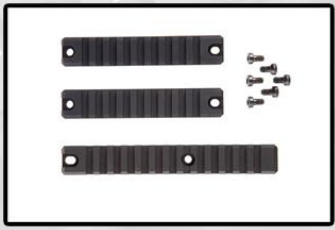
USC Rail Set (3)
Art. 07.03.03



HLS Full
Art. ---



Front Tube Extension
Art. 02.00.15



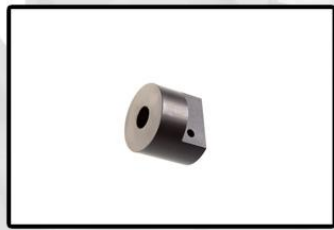
SL 8 Rail Set (3)
Art. 07.04.03



USC Rail Set (4)
Art. 07.03.04



HCL
Art. 09.02



Sling Swivel Adapter
Art. 02.00.19



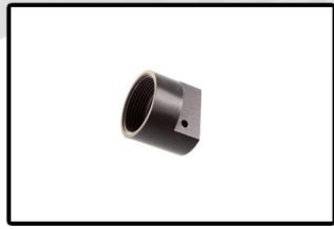
SL 8 Rail Set (2)
Art. 07.04.02



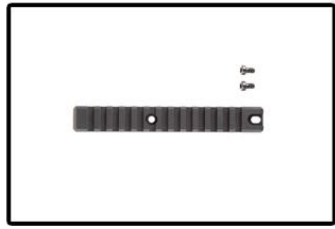
USC Top Rail (1)
Art. 07.03.01



HUS
Art. 09.03



Threaded End Cap
Art. 02.00.18



SL 8 Rail Bottom
Art. 07.04.01



Franchi Stock Adapter
Art. 05.01



HCU
Art. 09.04



GCC BLACK
Art. 01.01



USC - FSC
Art. 03.01



CQS Black
Art. 08.01



HLS Bright Grey
Art. 09.05



HCL BRIGHT GREY

HCL Bright Grey

Art. 09.06



HUS BRIGHT GREY

HUS Bright Grey

Art. 09.07



HCU BRIGHT GREY

HCU Bright Grey

Art. 09.08



TRIARIII
G17/19/22/23/31/32

Triarii
G17,19,22,23,31,32
Art. 10.01



TRIARIII
SIG 2022

Triarii
Sig 2022
Art. 10.02



M4 Stock (6 Positions)
w/o Spring, Buffertube
Art. 11.01



M4 Stock (6 Positions)
incl. Spring, Buffertube
Art. 11.02

